



ST. FRANCIS
IN THE FIELDS
EPISCOPAL CHURCH

77TH ANNUAL PARISH MEETING



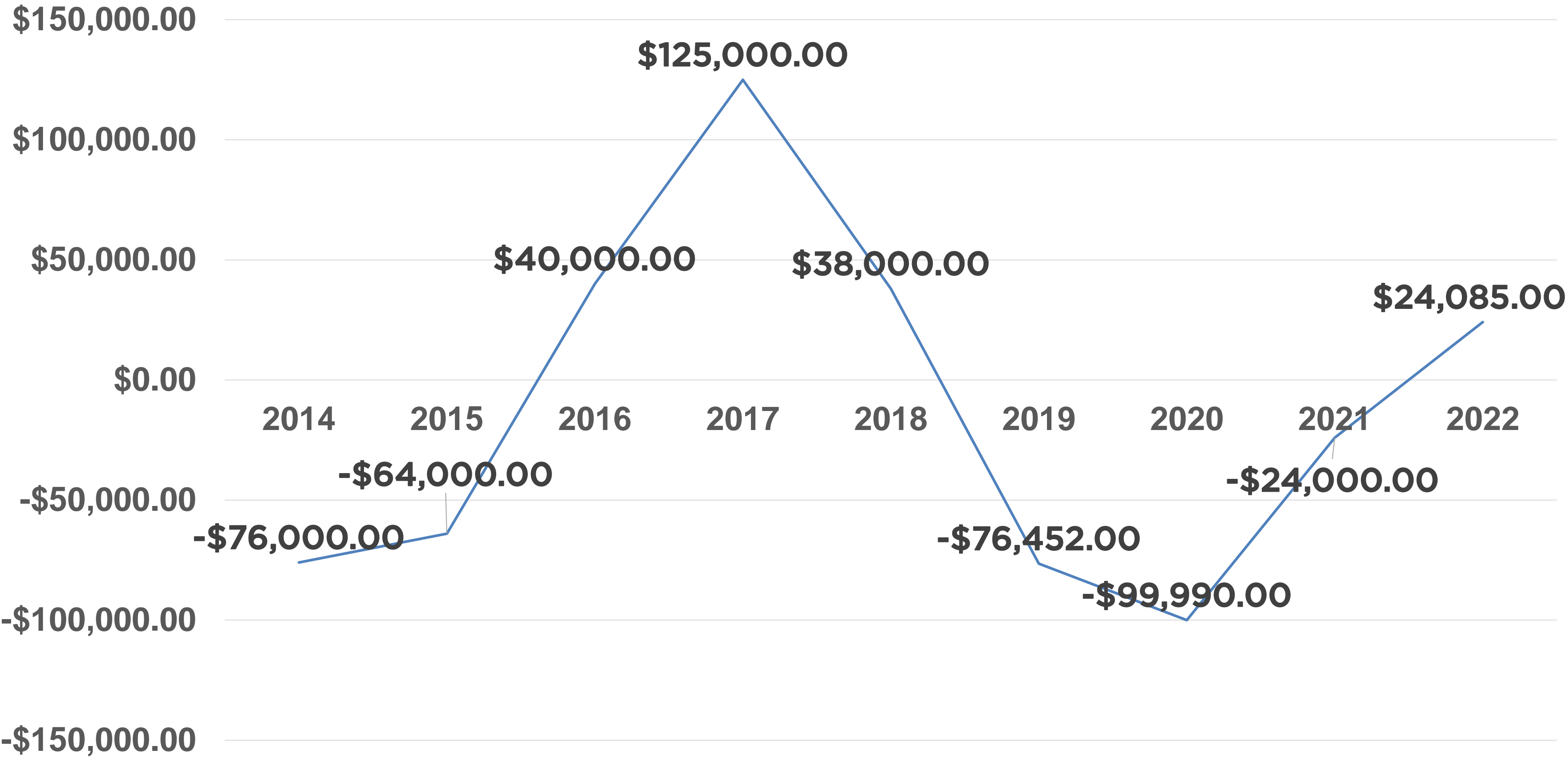
TREASURER'S REPORT

George Vieth

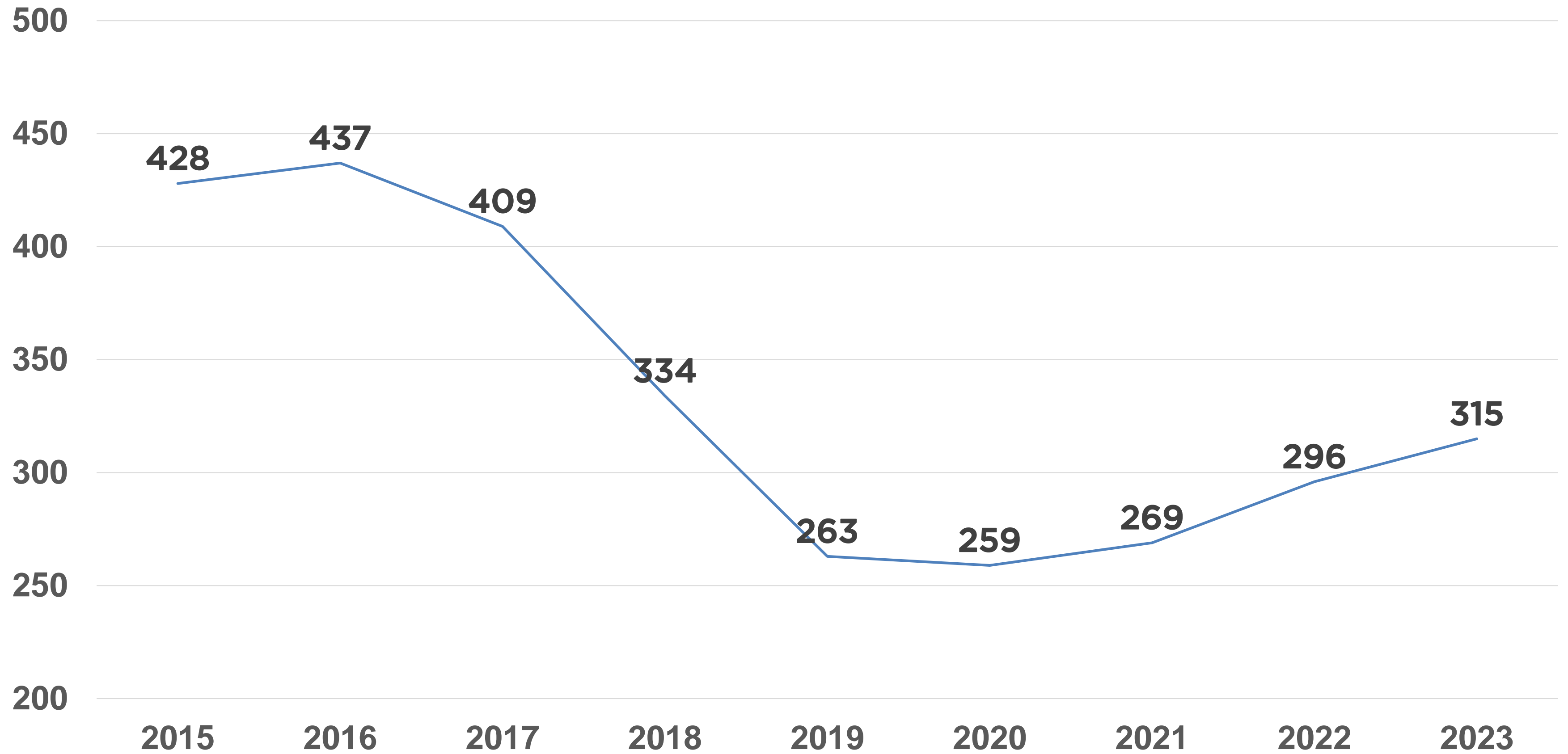
ST FRANCIS FINANCIAL CONDITION

- **Part One – The usual slides**
- **Part Two – 2023 Budget highlights**
- **Part Three – The important slides**

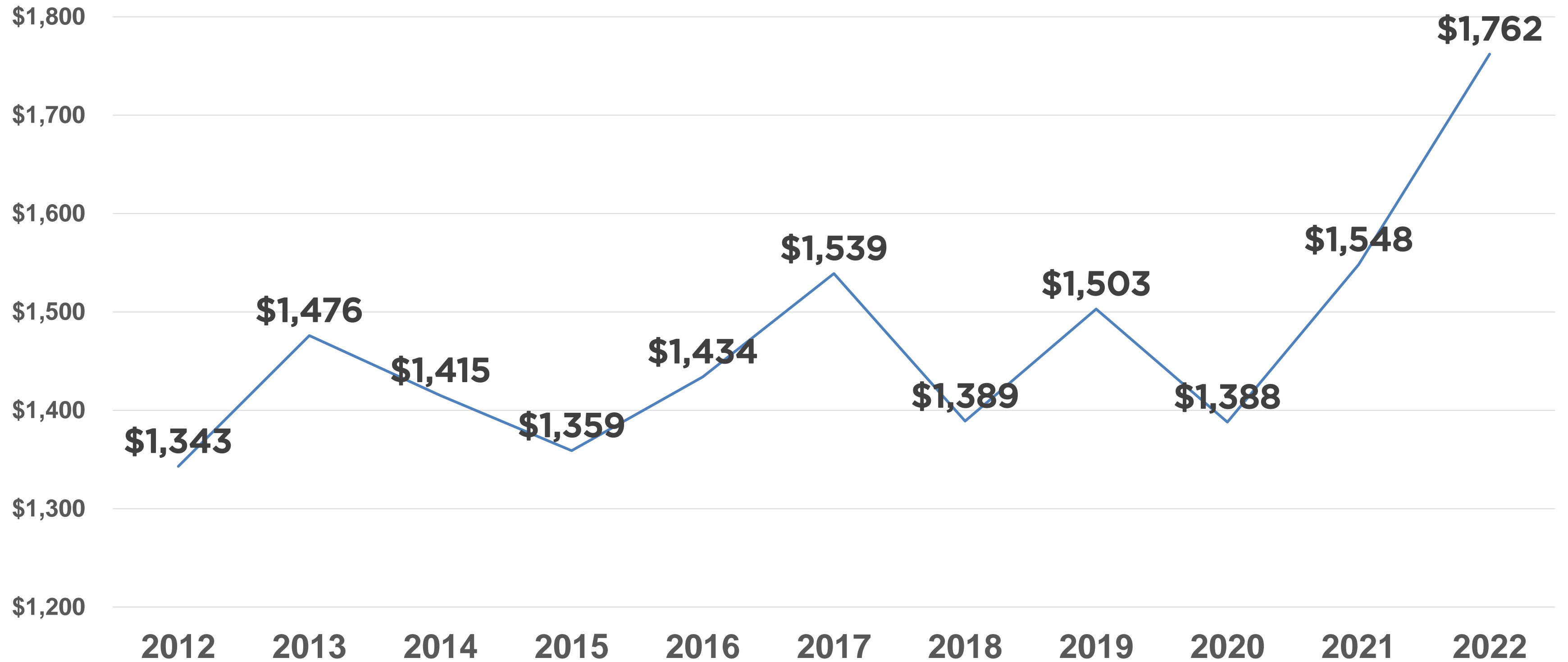
ANNUAL RESULTS



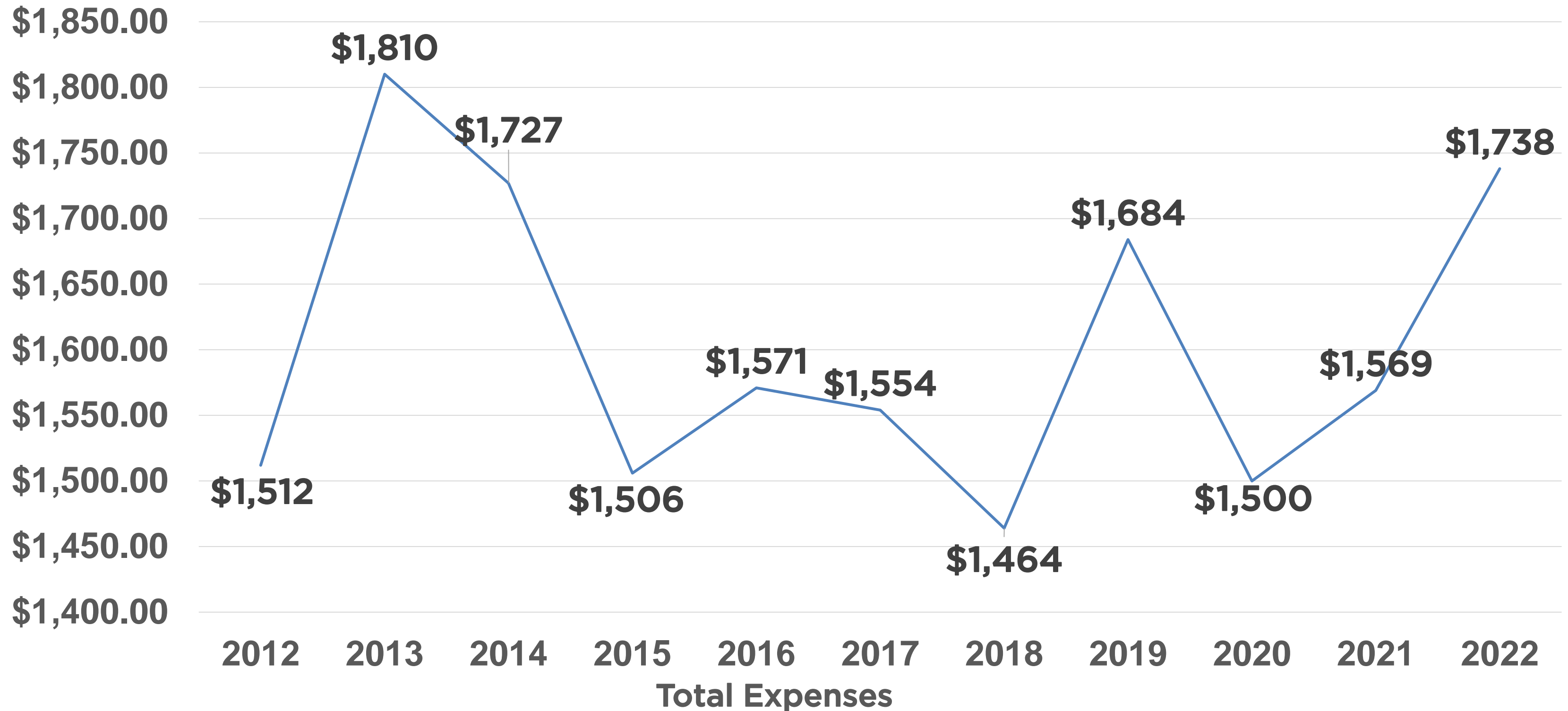
PLEDGING HOUSEHOLDS



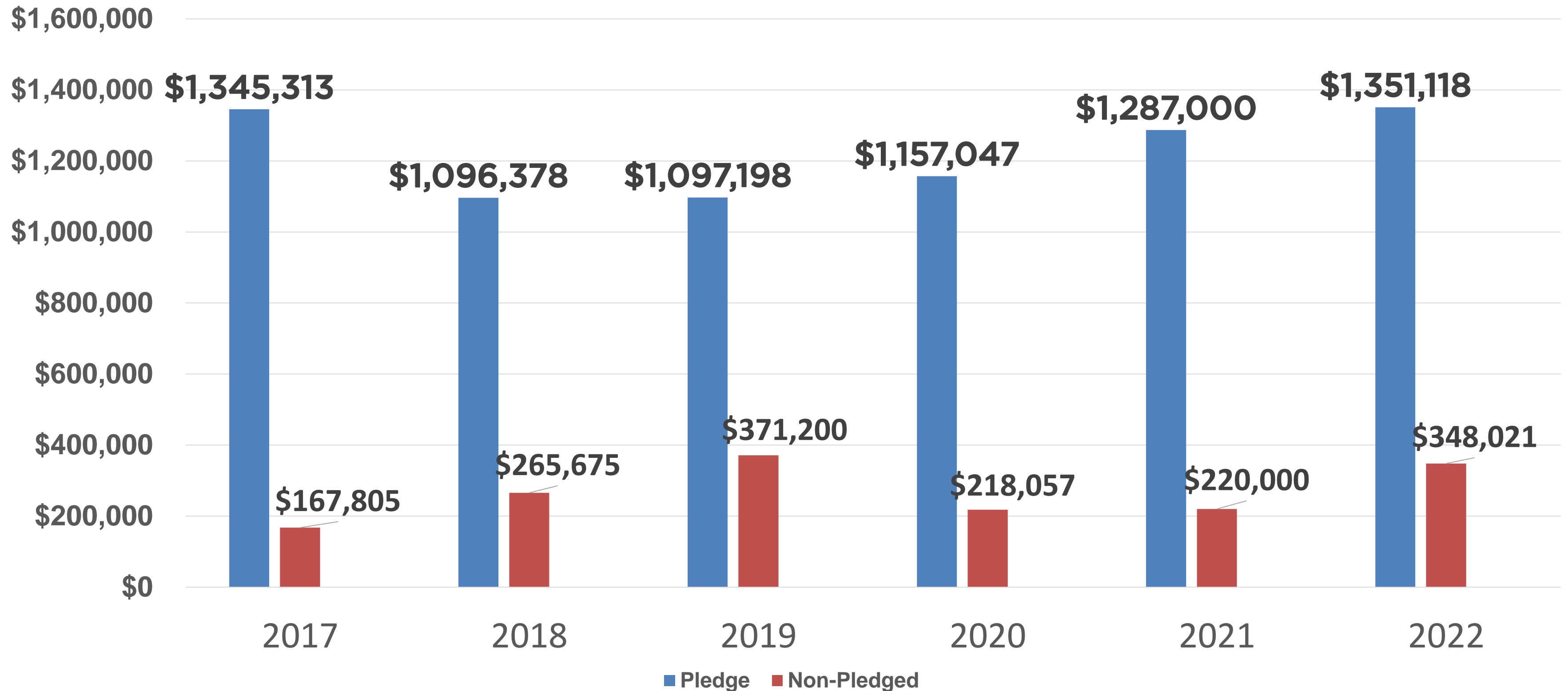
TOTAL REVENUE (000'S)



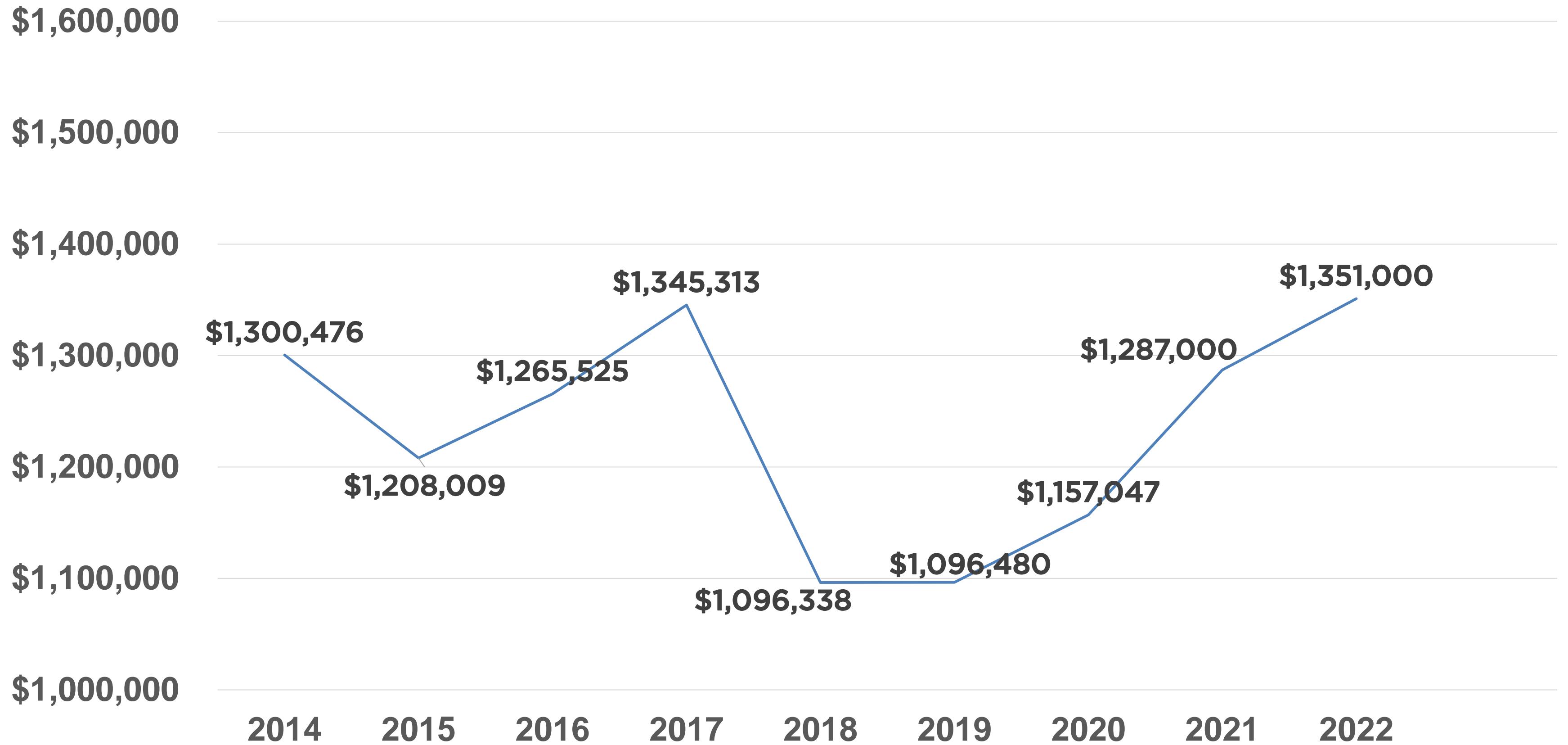
TOTAL EXPENSES (000'S)



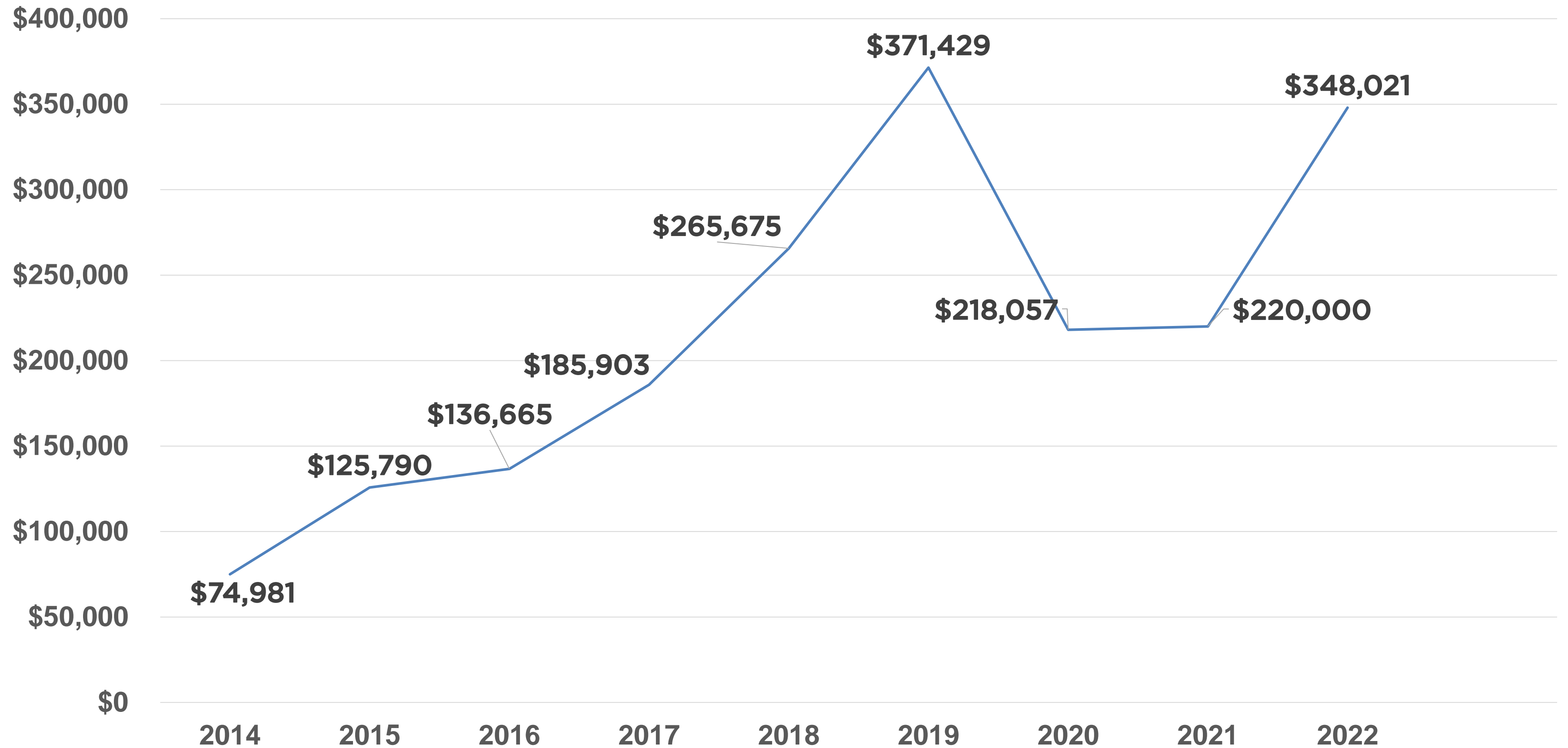
PLEDGED AND NON-PLEDGED GIFTS



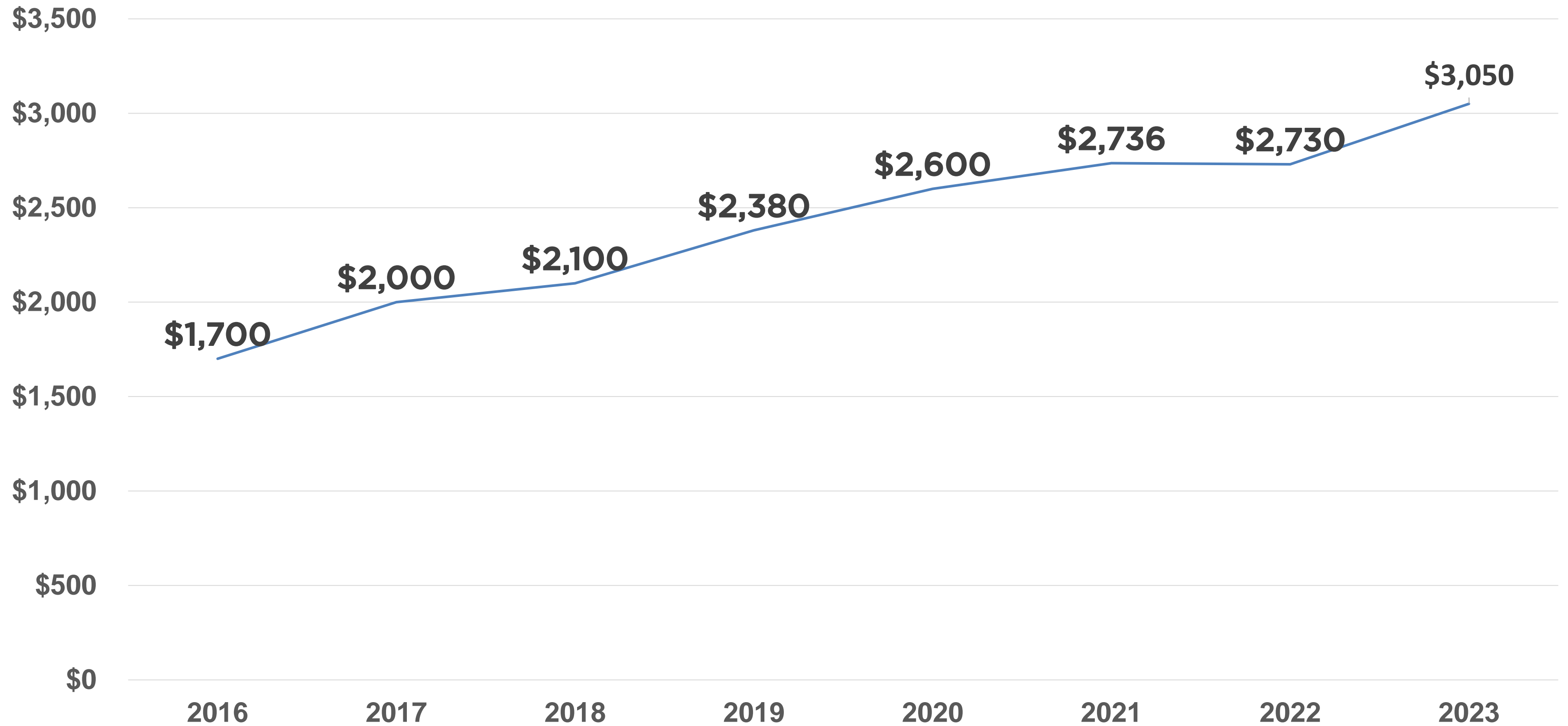
PLEDGE INCOME



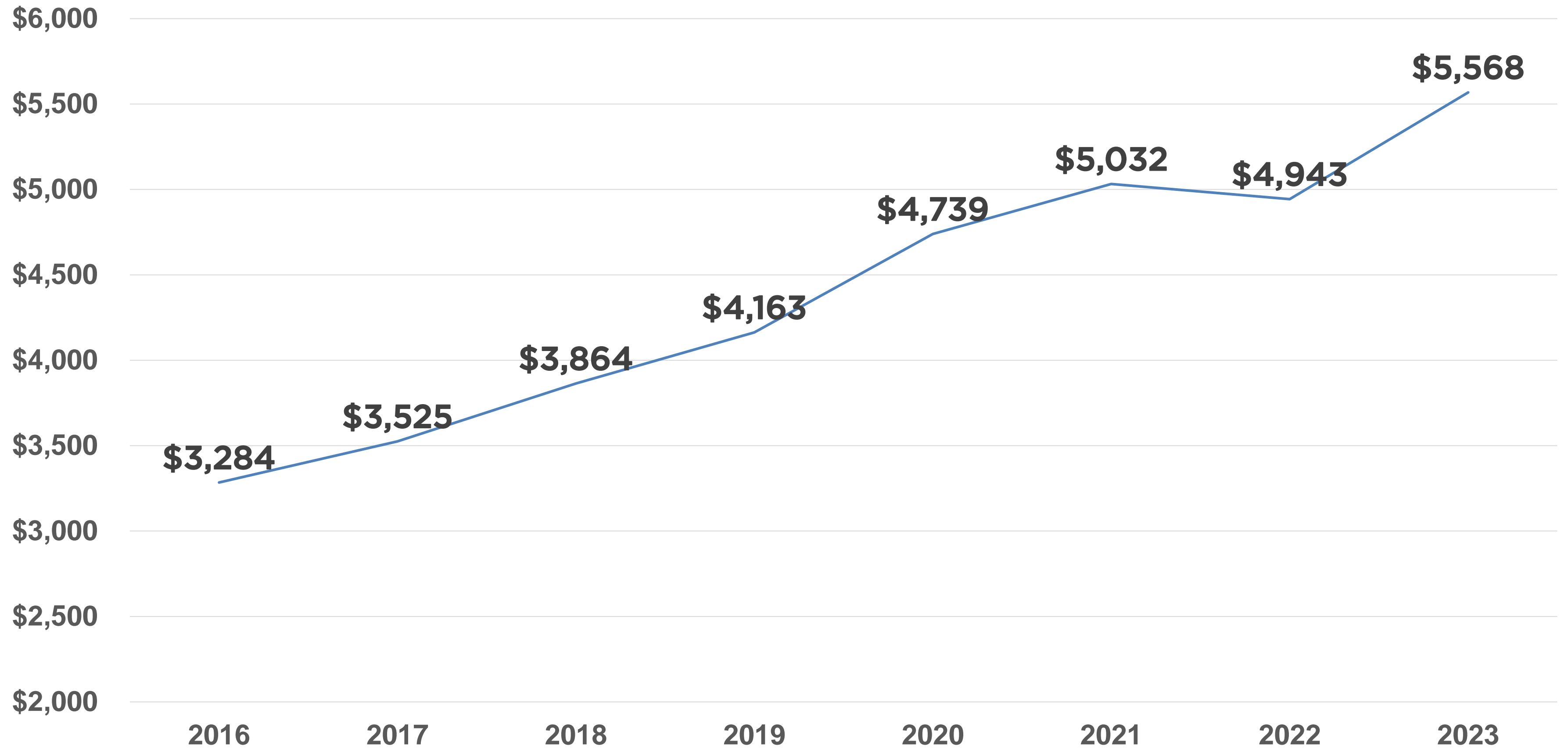
NON-PLEDGED GIFTS



MEDIAN PLEDGE

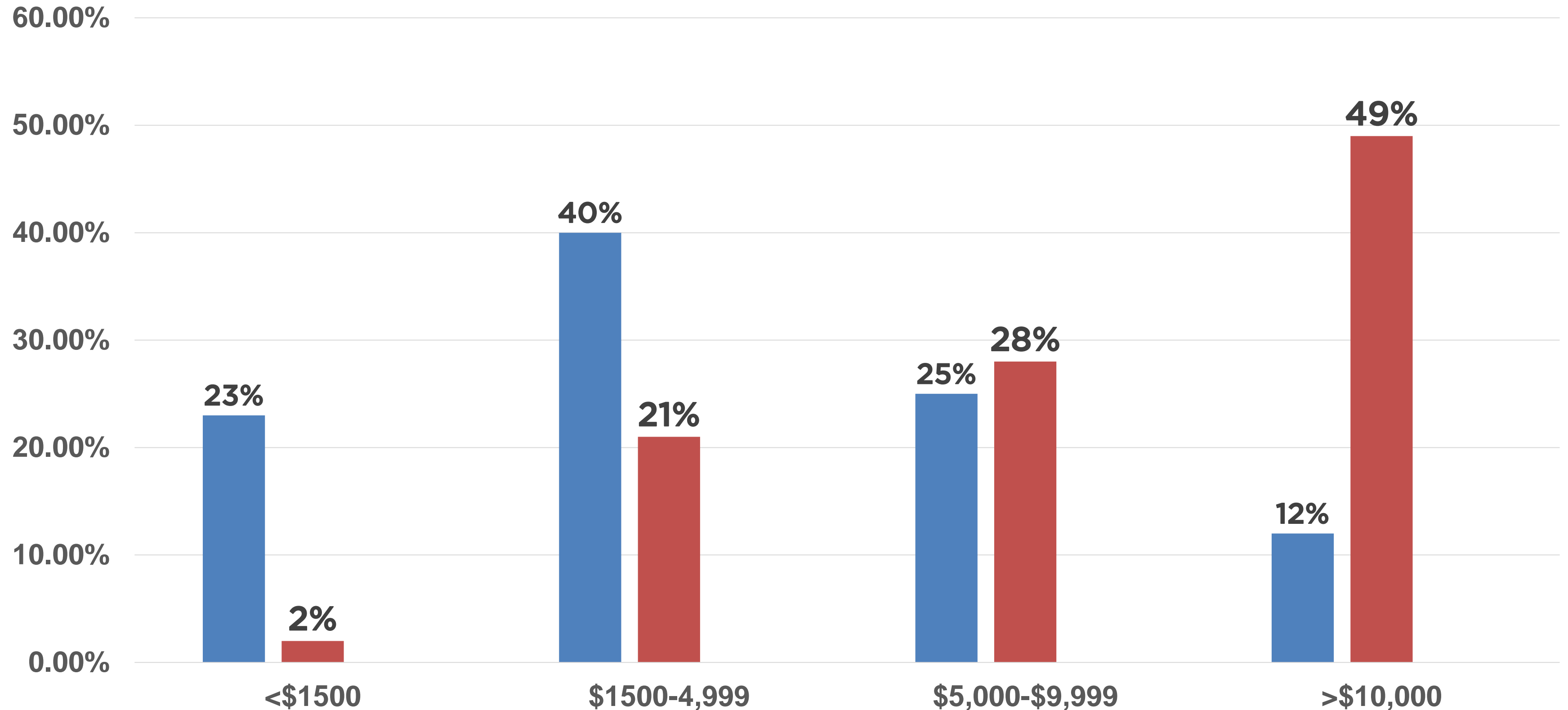


AVERAGE PLEDGE



PLEDGE REVENUE BY GIFT SIZE

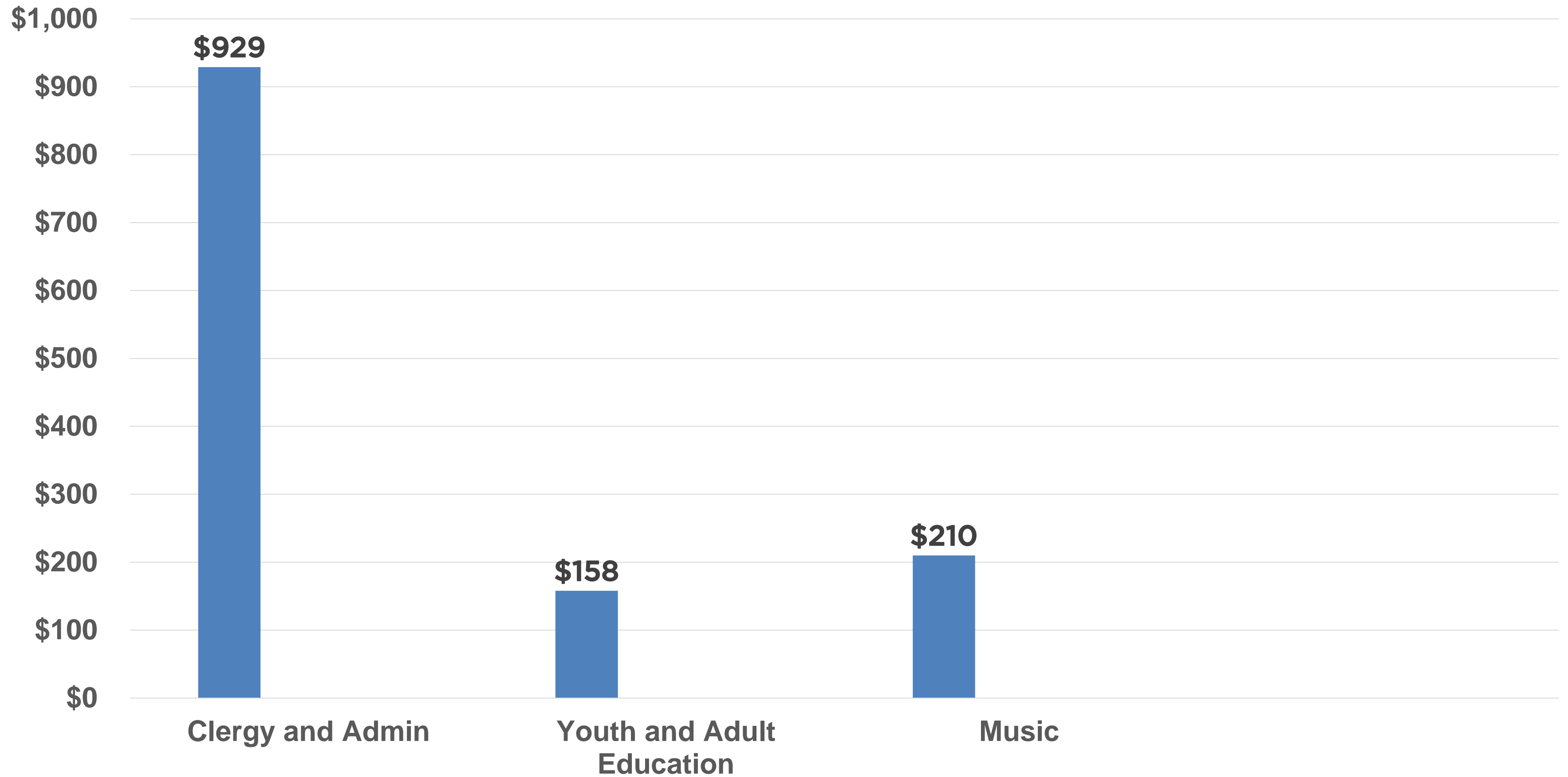
■ 2023 ■ 2022



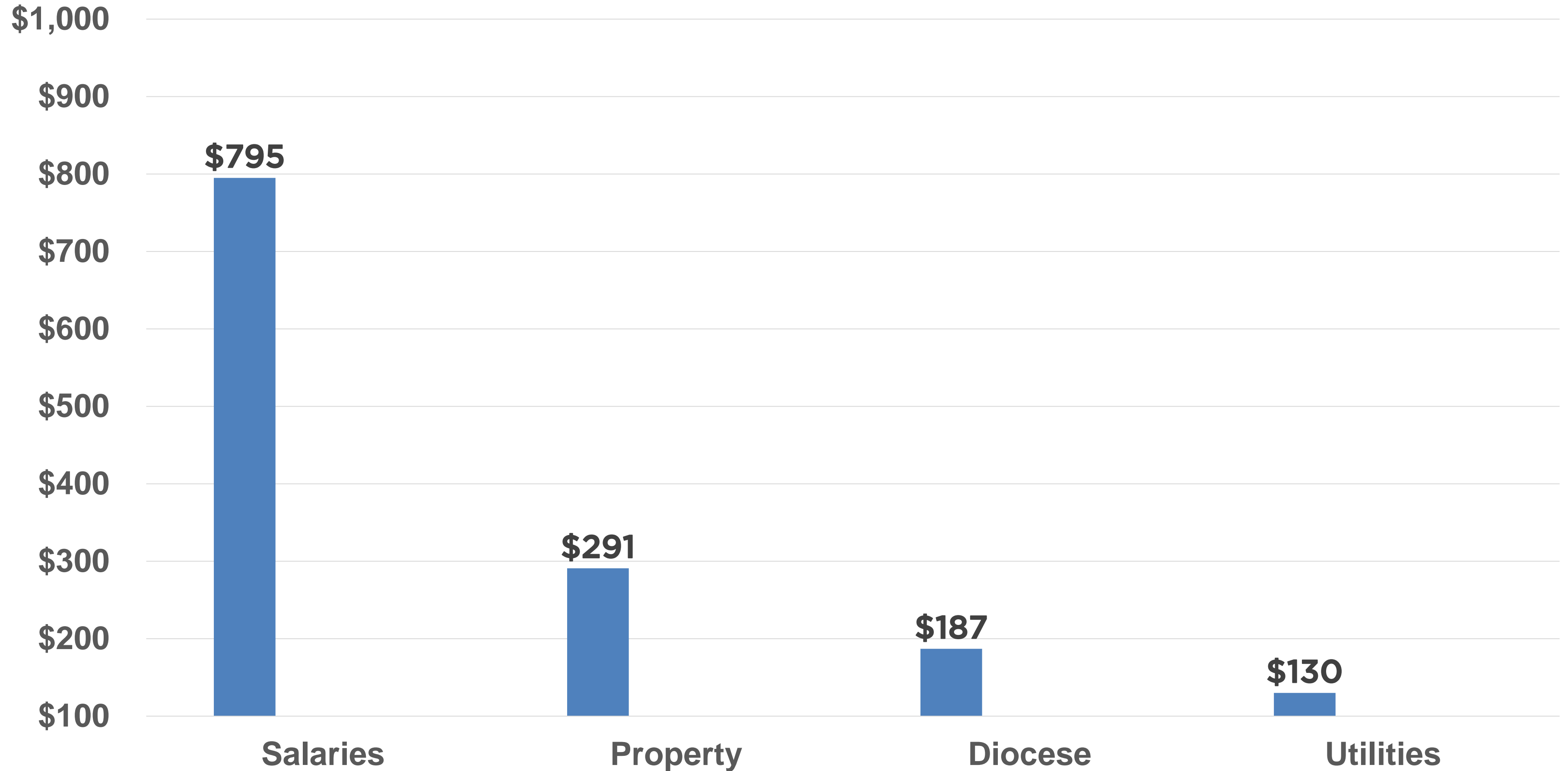
2023 BUDGET

- **Terrific EMC; Highest Pledge Total Ever!**
 - 1.65 in pledges, 200k in non-pledged gifts, 315 pledges
- **Staffing Changes in 2023:**
 - Part Time Priest Associate (Bob Coon)
 - Full Time Parish Administrative Officer (Emily Feeney)
 - Full Time Communications Admin Staff-person (Karen Ellestad)
- **Property Investments**
 - New playground
 - New carpet in Graves Hall
- **Budget for 2023**
 - Budget deficit of \$75,000
 - Approximately negative \$100,000 run rate at year end
- **Diocesan contribution of \$187,000**
 - Will increase further in coming years

PRIMARY PROGRAMS



MAJOR BUDGET ITEMS



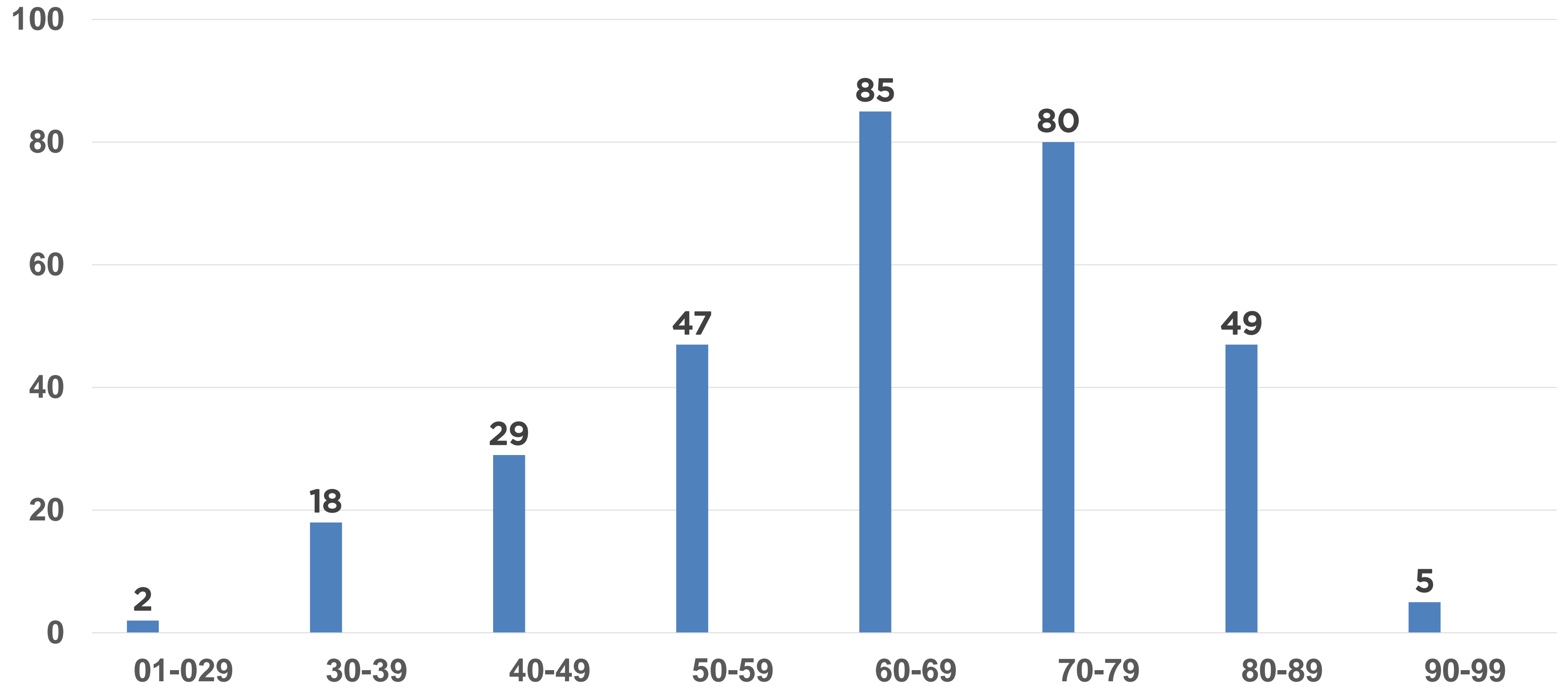
ST. FRANCIS FUNDS

General Fund	\$277,000
Endowment Funds	\$3,157,000
Scholarship Funds	\$1,706,000

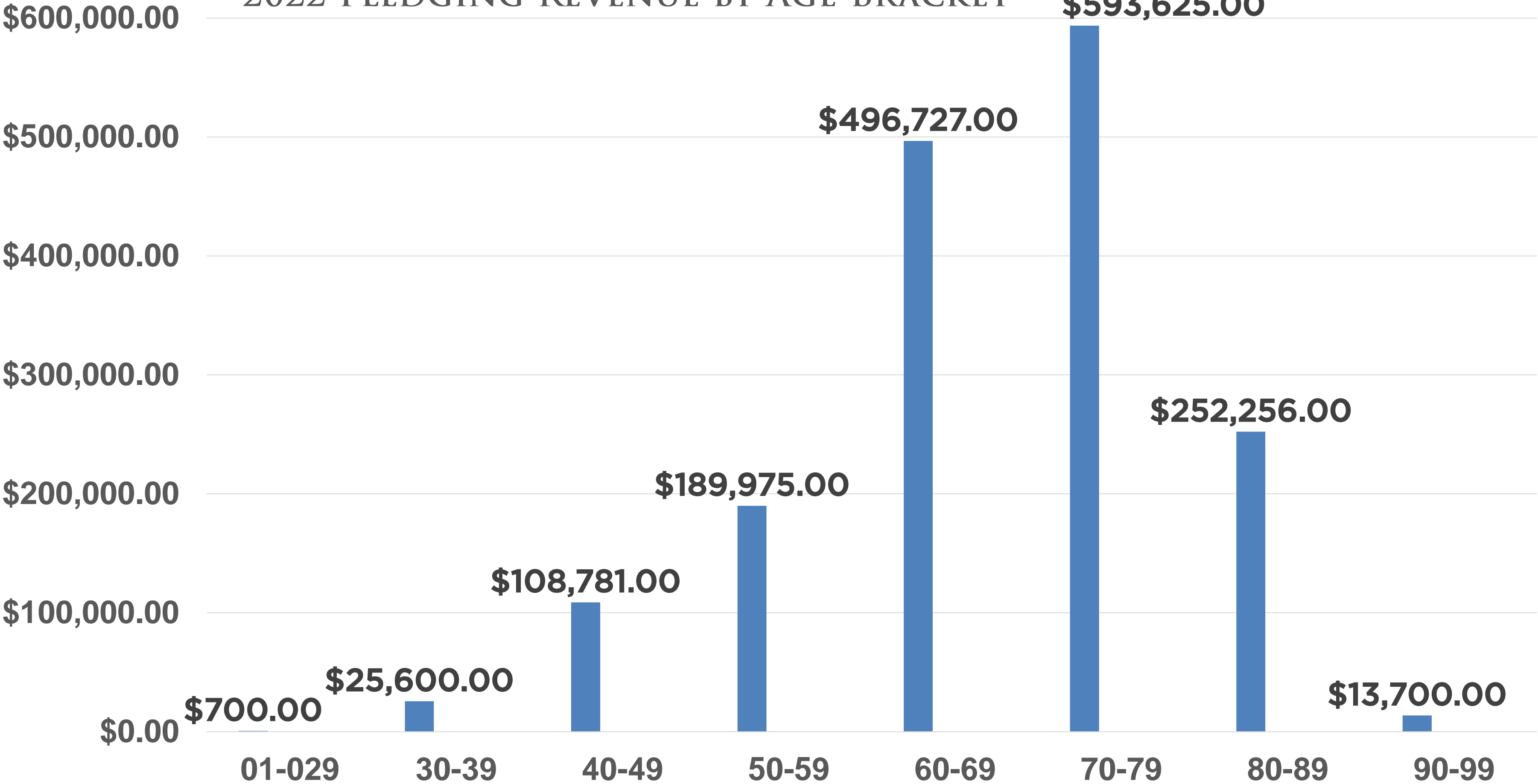
The background of the image is a dense, overlapping crowd of stylized human figures. Each figure is constructed from two simple shapes: a circle for the head and a pentagon for the body. The figures are made of various colored papers, including shades of blue, red, yellow, green, orange, pink, and white. They are arranged in a way that creates a sense of depth and movement, with some figures appearing to be in the foreground and others receding into the background. The overall effect is a vibrant, abstract representation of a large group of people.

DEMOGRAPHICS ARE DESTINY

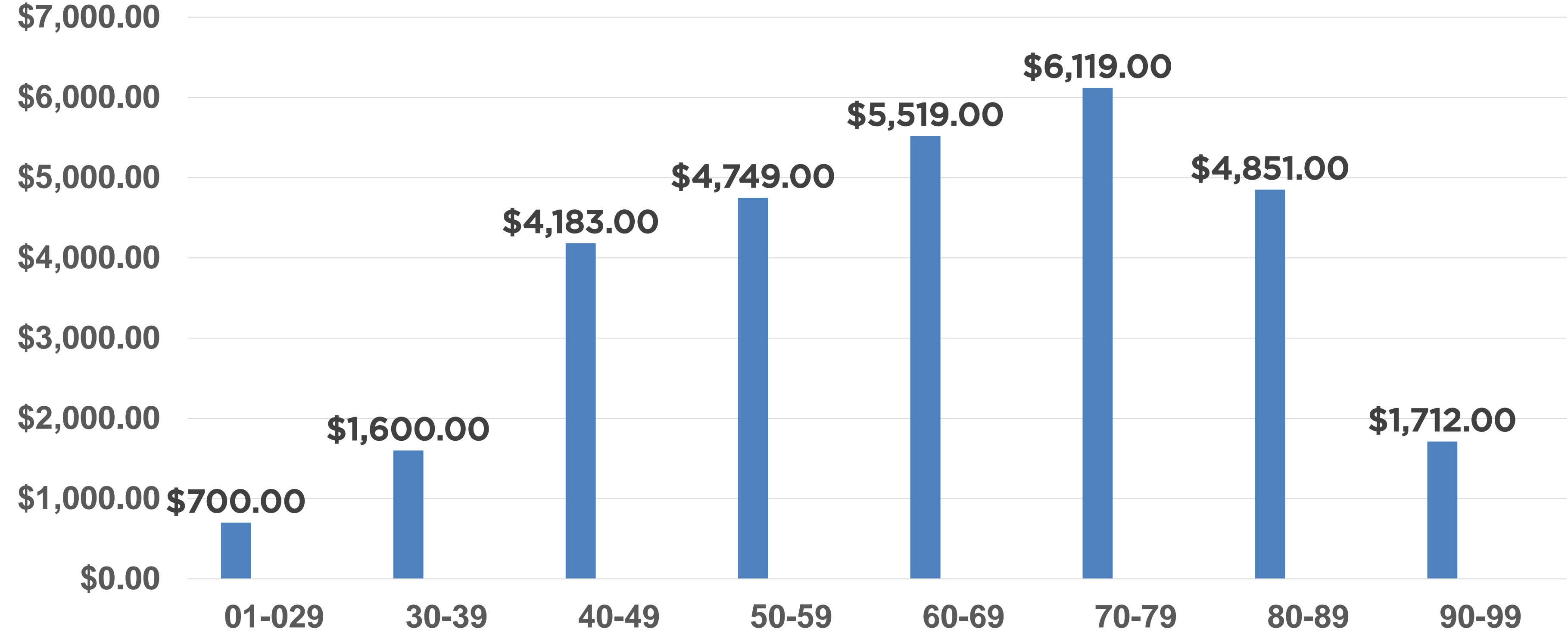
2023 PLEDGING HOUSEHOLDS BY AGE BRACKET



2022 PLEDGING REVENUE BY AGE BRACKET

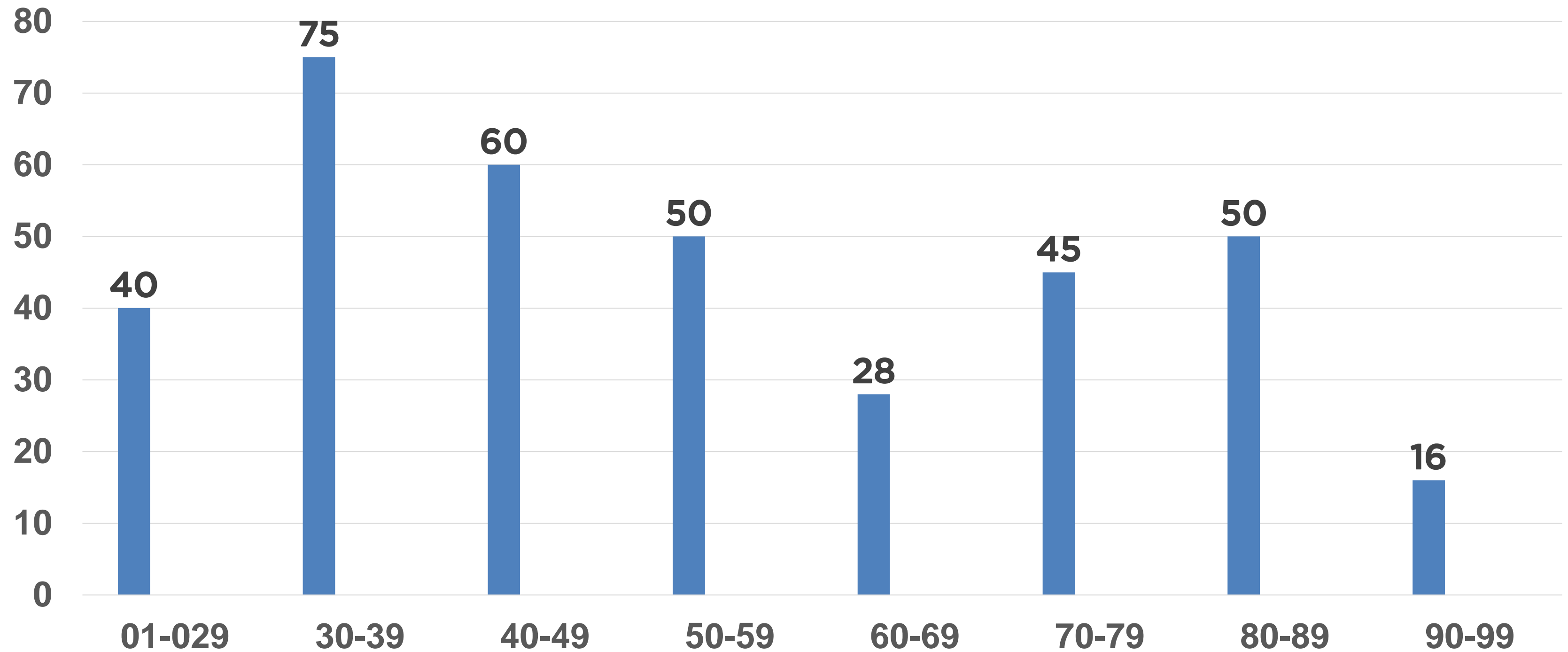


2022 AVERAGE PLEDGE BY AGE BRACKET

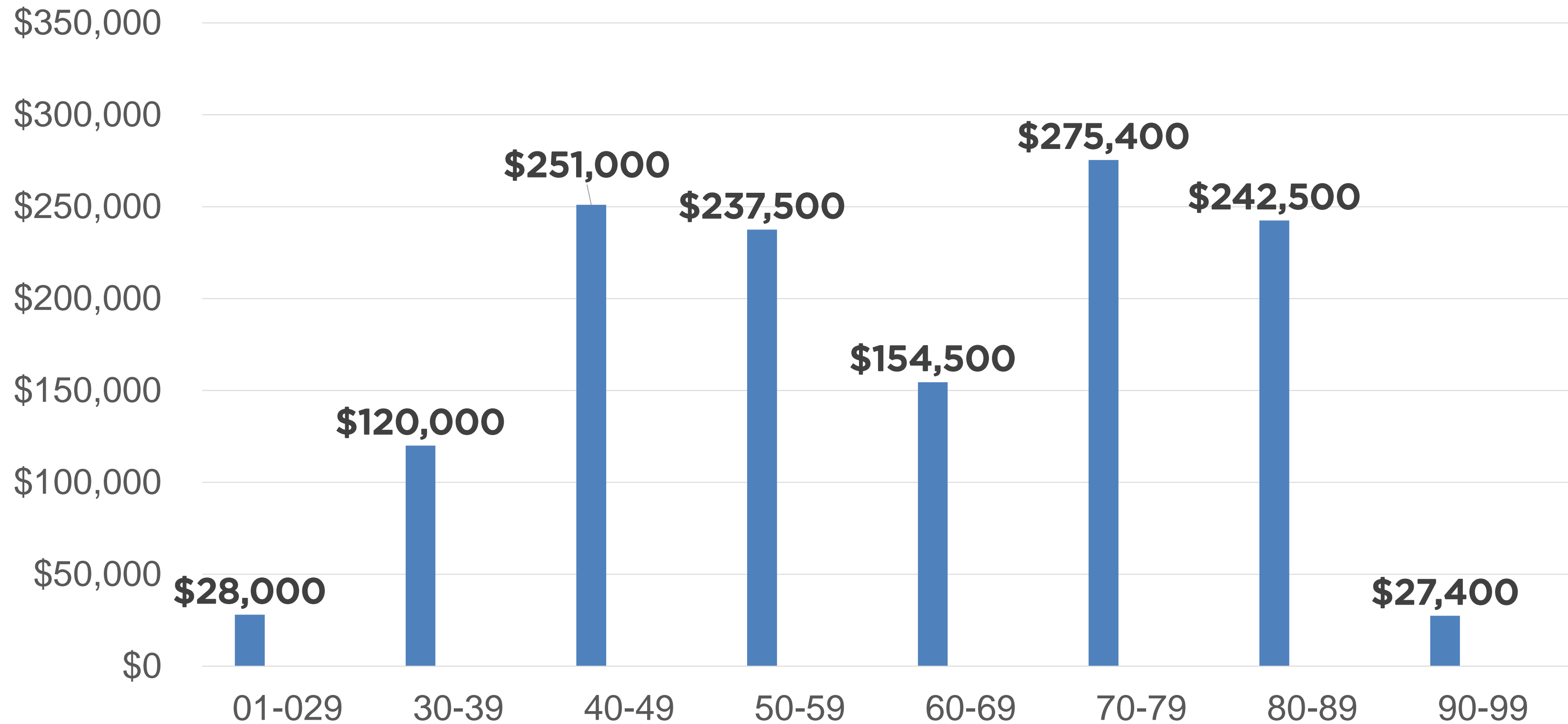


2030 Pledging Households by Age Bracket

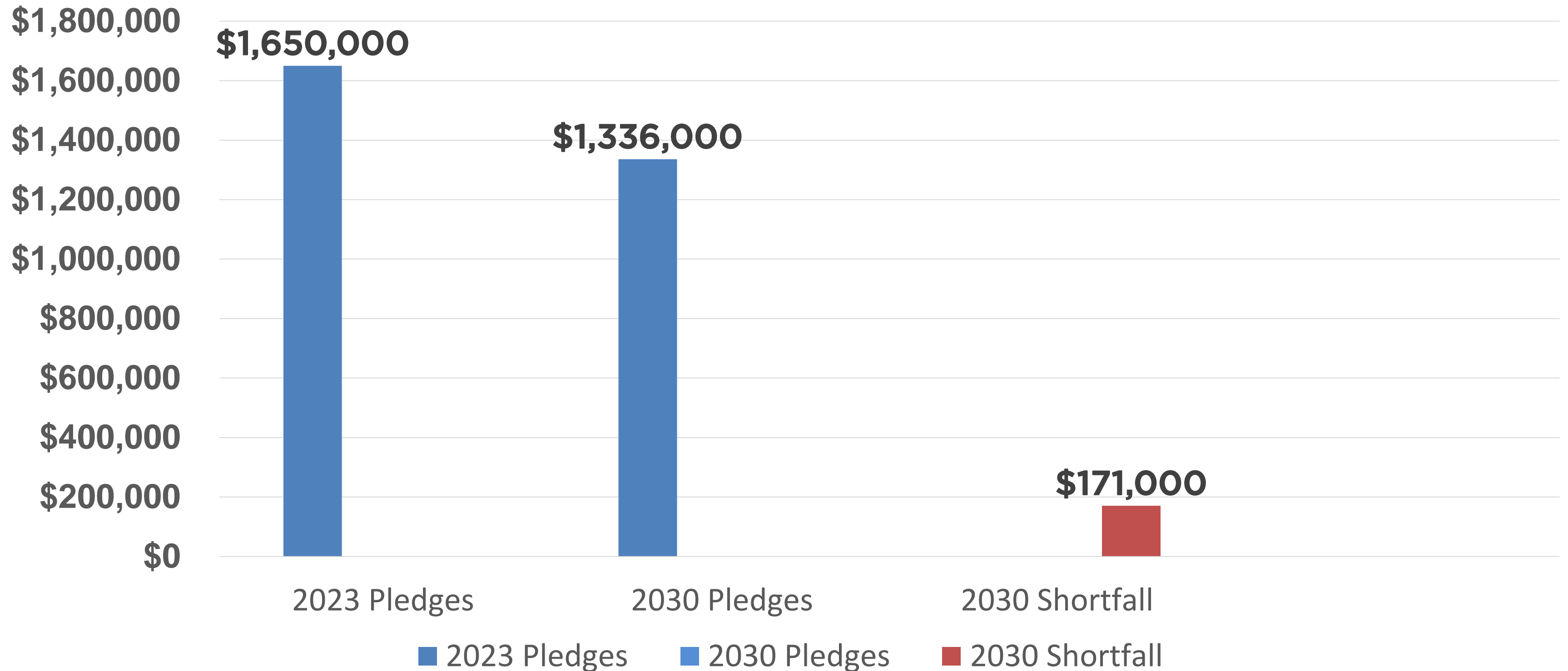
16% Increase in Households



2030 Pledging Revenue by Age Bracket



2023 Pledge Revenue vs 2030 Pledge Revenue



BRIDGING THE GENERATIONAL GAP

- Current Endowment \$3 Million
- Needed Endowment \$10 Million
- Sources
- Lifetime Gifts
 - Tax Benefits
- Testamentary Gifts